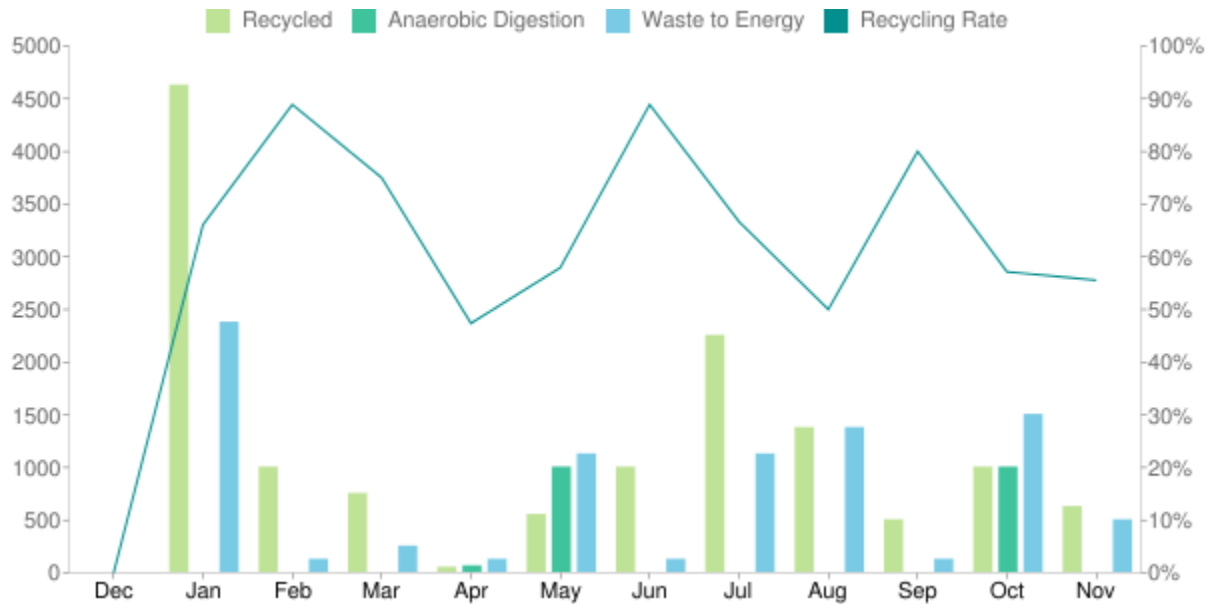


Material collected (kgs)

LAST 12 MONTHS



Dec	Jan	Feb	Mar	Apr	May	Jun	Jul	Aug	Sep	Oct	Nov	Total
0	4,625	1,000	750	50	550	1,000	2,250	1,375	500	1,000	625	13,725
0	0	0	0	62	1,000	0	0	0	0	1,000	0	2,062
0	2,375	125	250	125	1,125	125	1,125	1,375	125	1,500	500	8,750
0%	66%	89%	75%	47%	58%	89%	67%	50%	80%	57%	56%	64%

Material recycled

LAST 12 MONTHS

CARDBOARD

2,250 kg

JUNK REMOVAL

0 kg

COFFEE GROUNDS

2,000 kg

MIXED RECYCLING

11,375 kg

FOOD RECYCLING

62 kg

PAPER SHREDDING

0 kg

GENERAL WASTE

8,750 kg

WEEE AND TONER

100 kg

GLASS

0 kg

Key statistics

	THIS MONTH	PAST 12 MONTHS
TREES SAVED:	7	130
CO2 TONNES SAVED:	1	860
KWH ENERGY PRODUCED:	275	9,567
RECYCLING RATE:	56%	64%